

Atlas

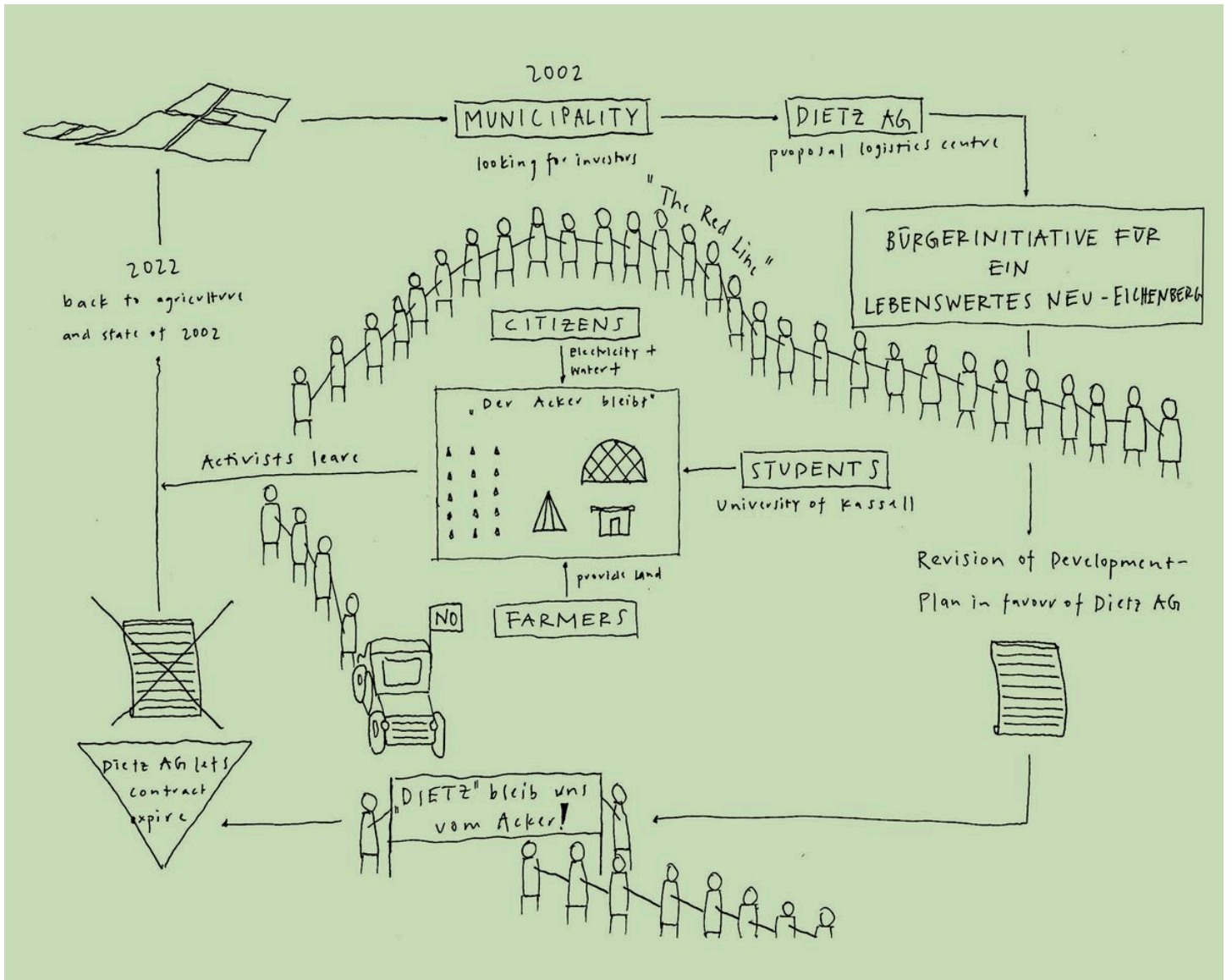
# Prototypes: Models of Community-Based Agriculture Today

Leon Bloch, Mira Weingartner, Viktor Jørgensen, Yufei Li, Claudia da Silva Bütikofer,  
Jonas Zimmermann, Martino Galli, Jennifer Bragheti, Michèle Zeder, Sofia Gloor,  
Till Blaser, Amélie Lambert, Nadina Häni, Donata De Ieso, and Roman Schürch

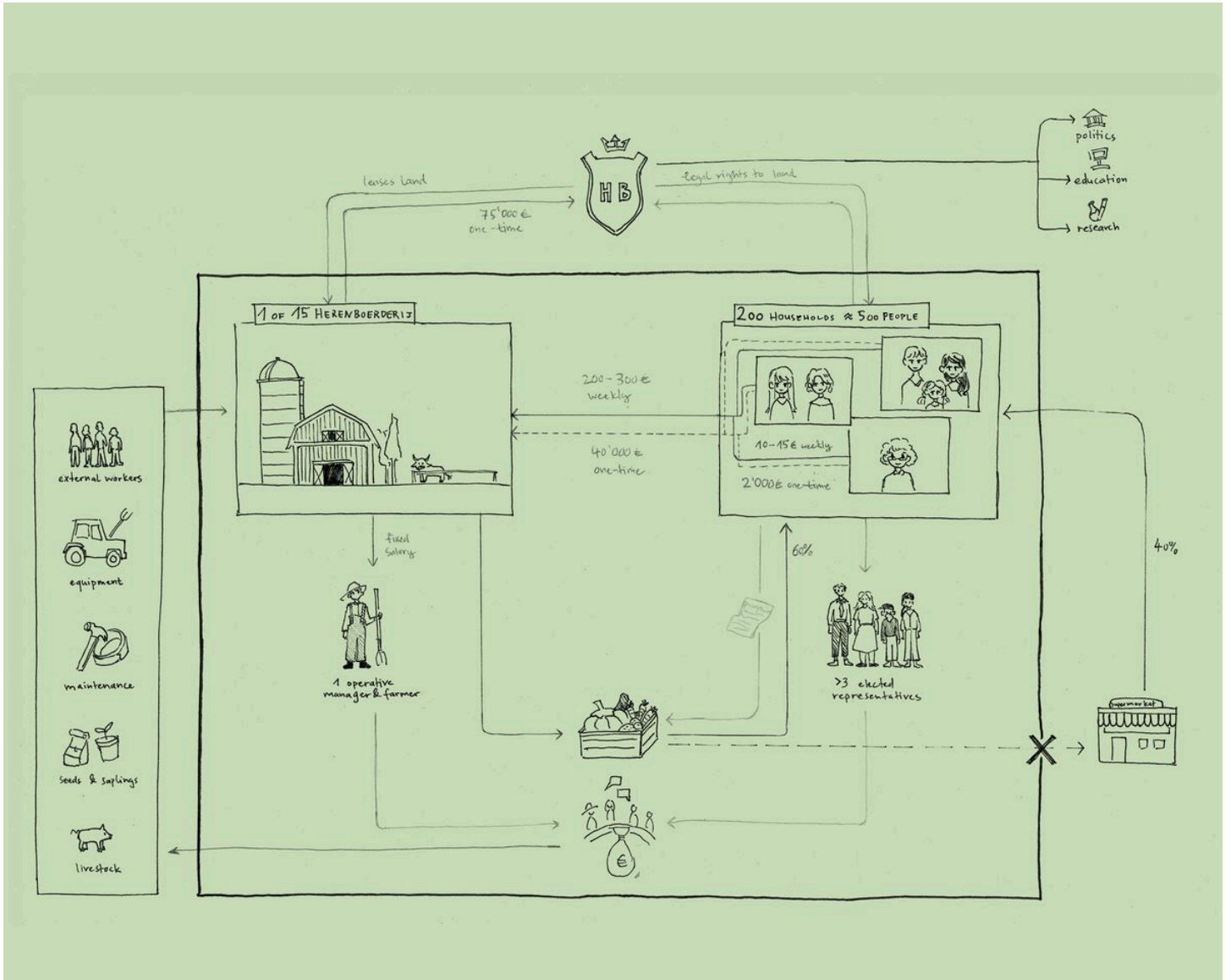
What we see today in pioneering initiatives around Switzerland and Europe is an agrarian vision based on organising from below and on commoning land and labour. Alternative farming practices such as Solidarische Landwirtschaft (SoLaWi) or Community-Supported Agriculture (CSA) have shown the potential of agroecological approaches to integrate the former passive consumers as active contributors in solidary economies of shared agricultural work and shared risks protecting against changing prices or bad harvests. Despite their social and environmental benefits, such practices currently account for only a tiny fraction of the agriculture in the Canton. Six case studies situated in Germany and Switzerland present a diversity of pioneering models in agriculture in relation to ownership, land and agricultural practice.

---

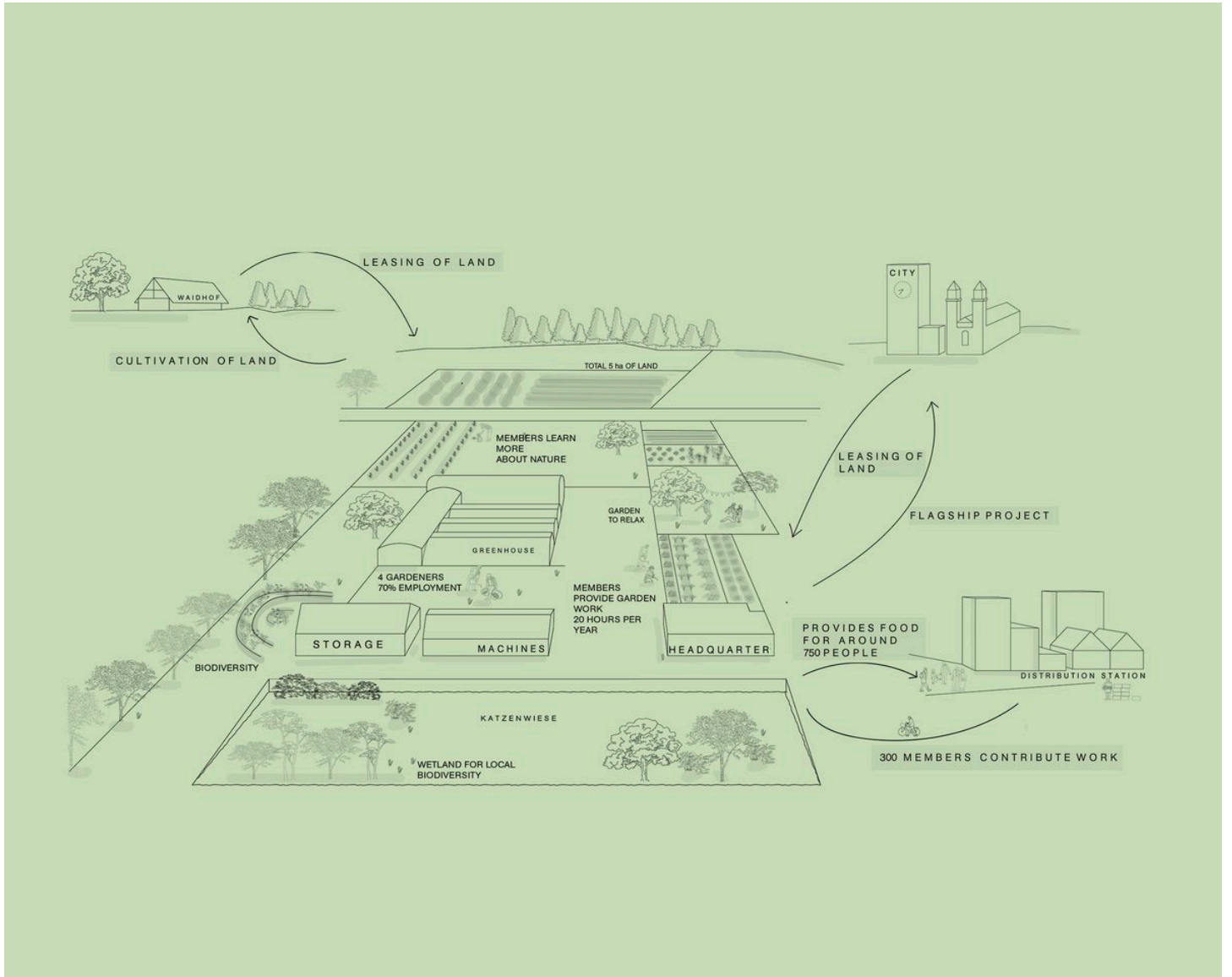
## Prototypes



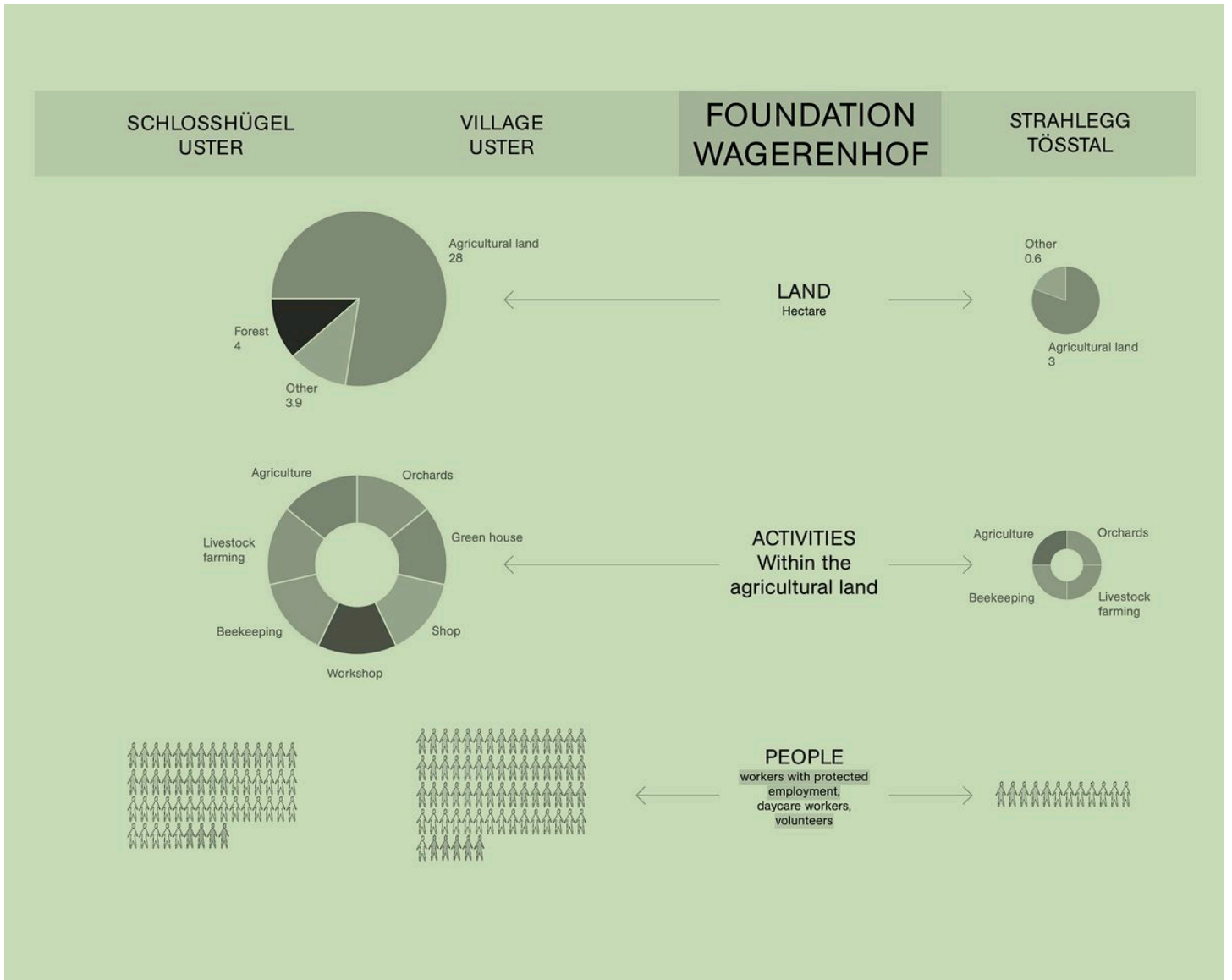
DER ACKER BLEIBT  
Farm Land Squatting



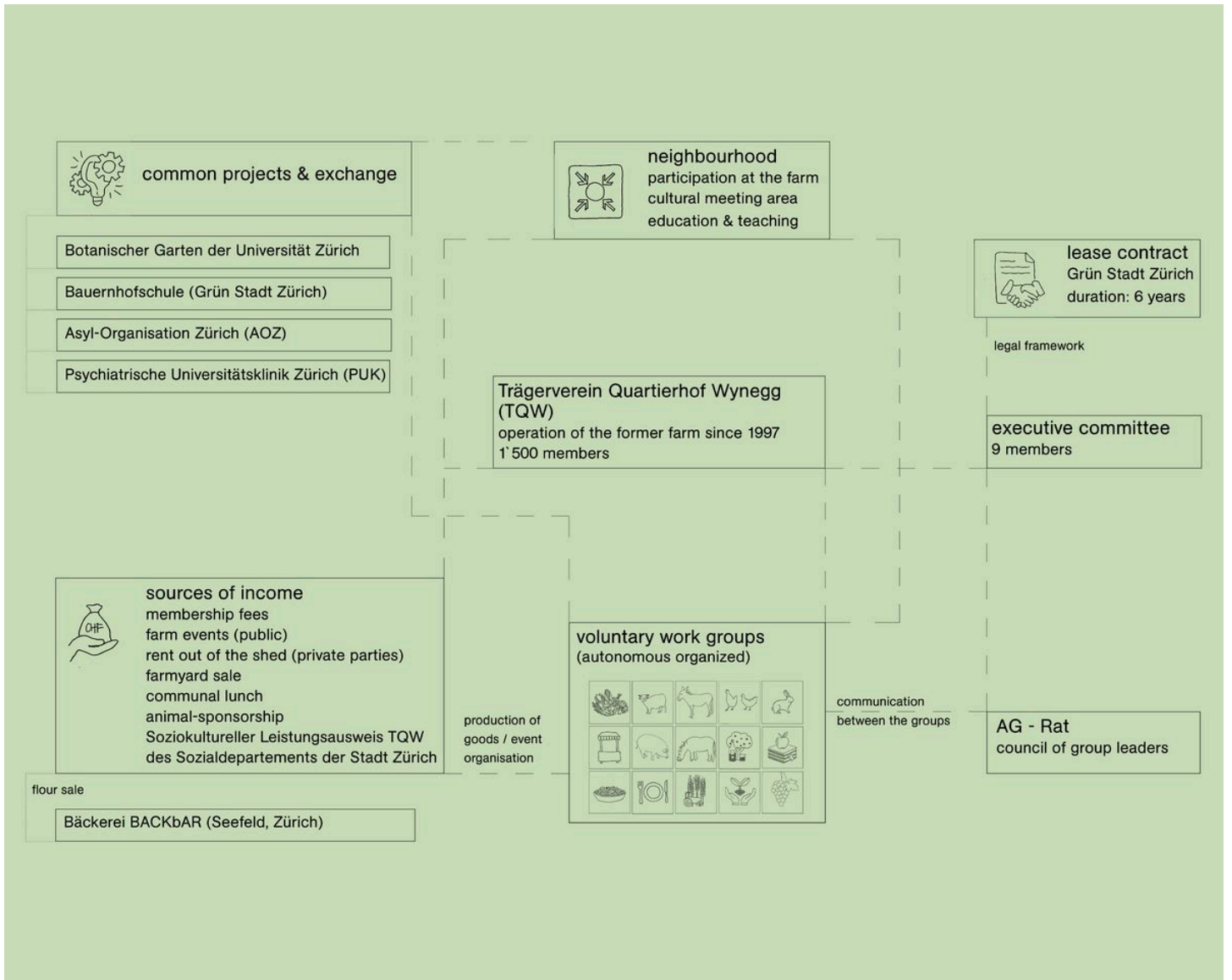
HERENBOEREN  
Large-scale Community-Based Farming



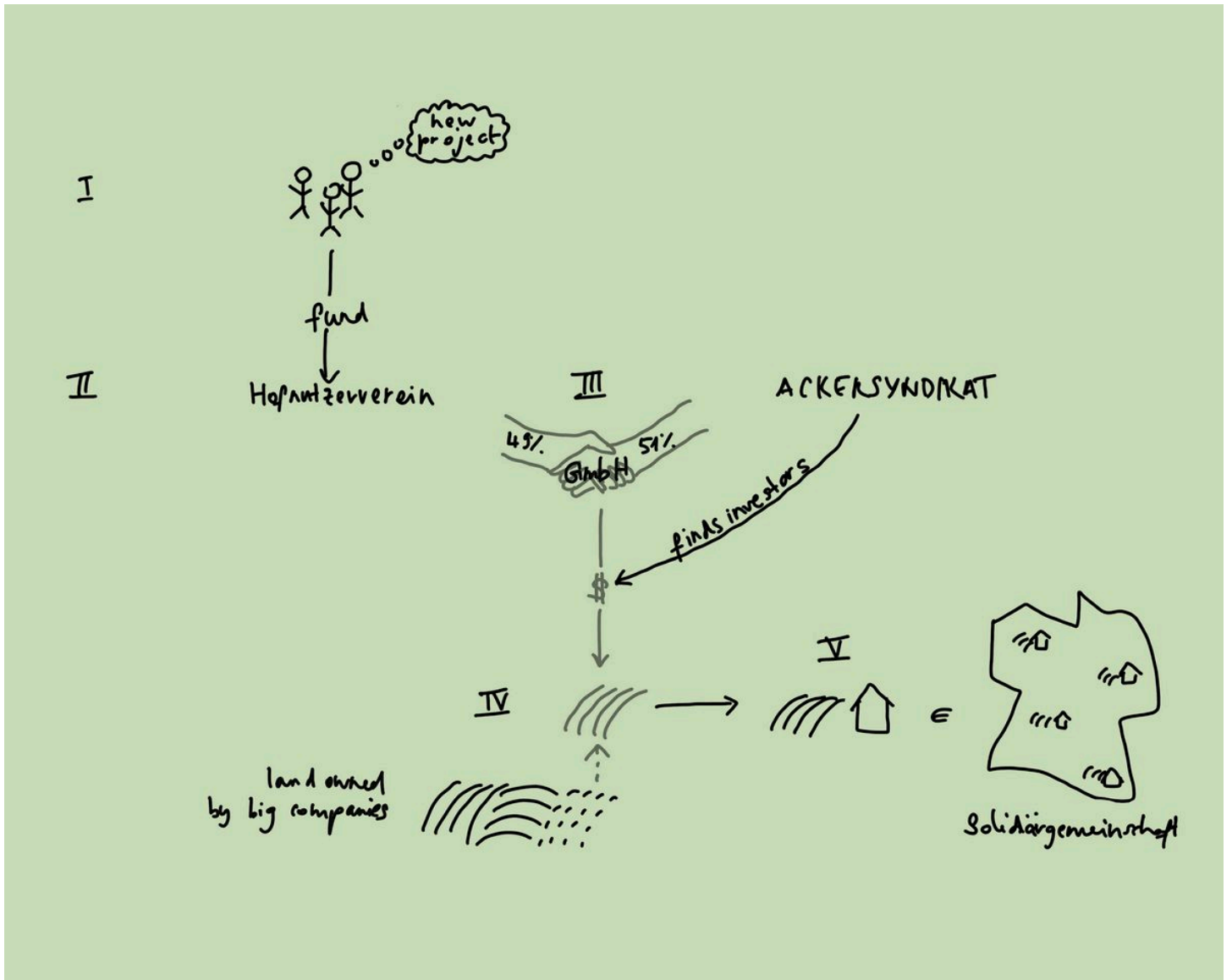
MEH ALS GMÜES  
Solawi and Housing



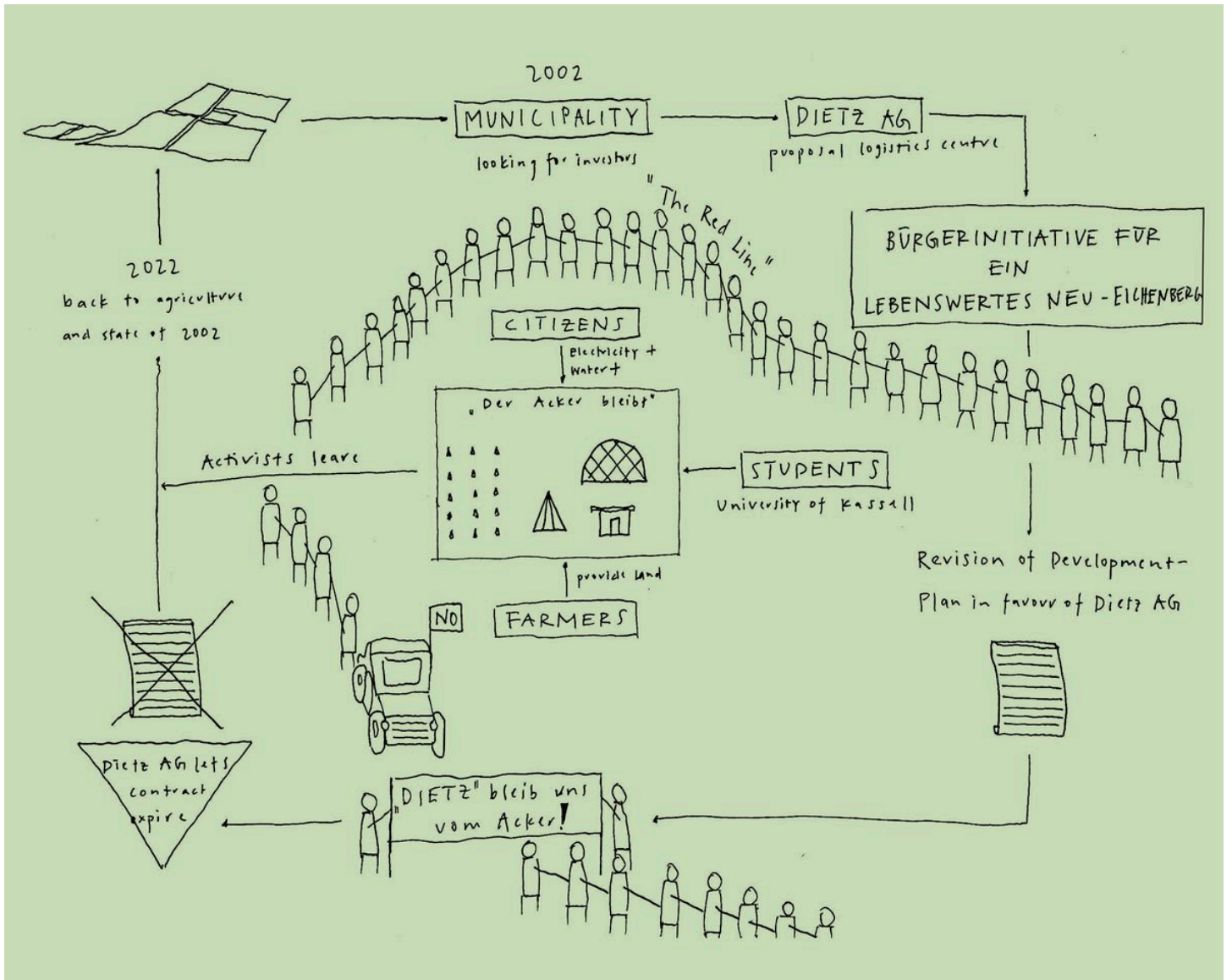
WAGERENHOF  
Farming and Care



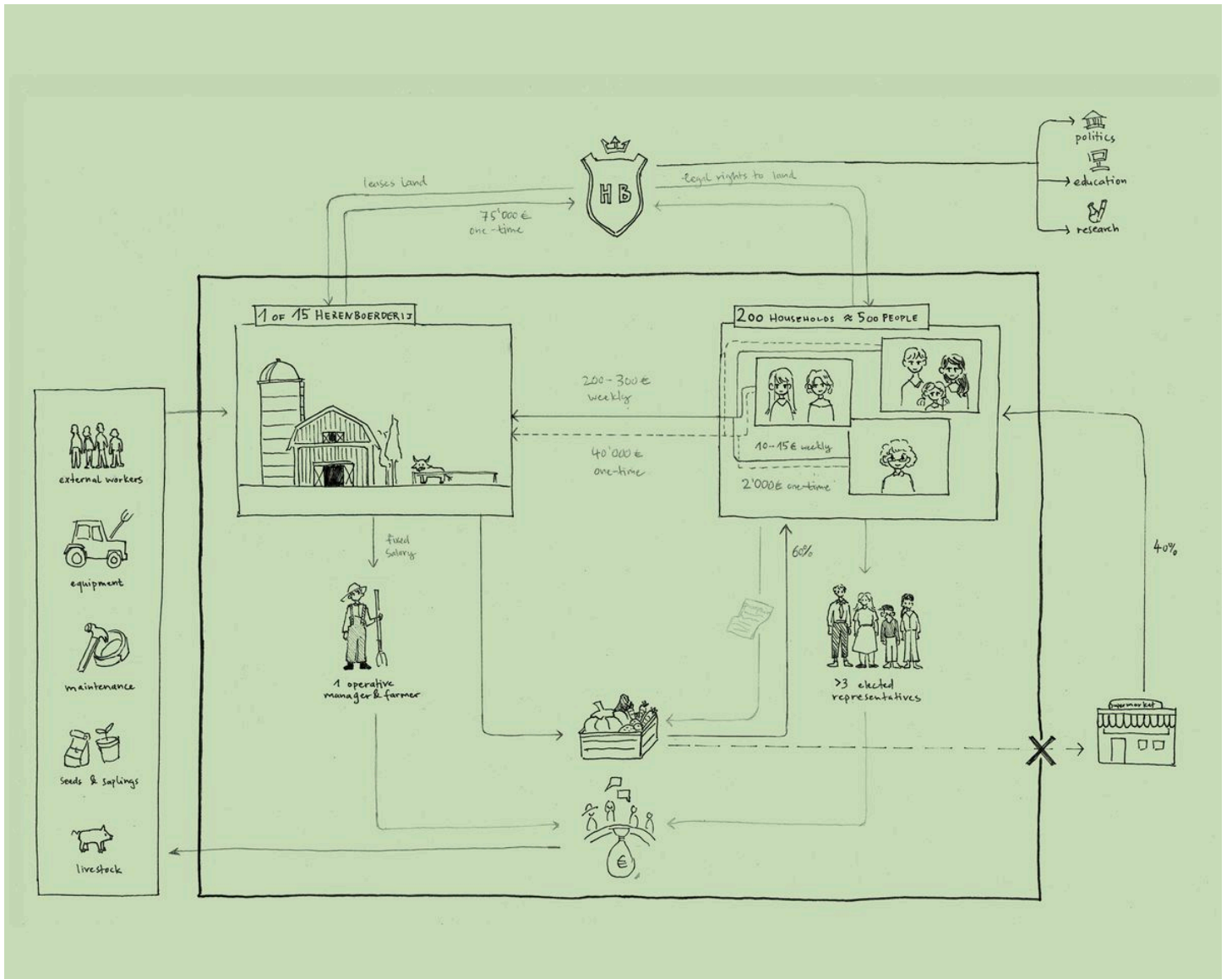
QUARTIERHOF WYNEGG  
Neighbourhood Farm



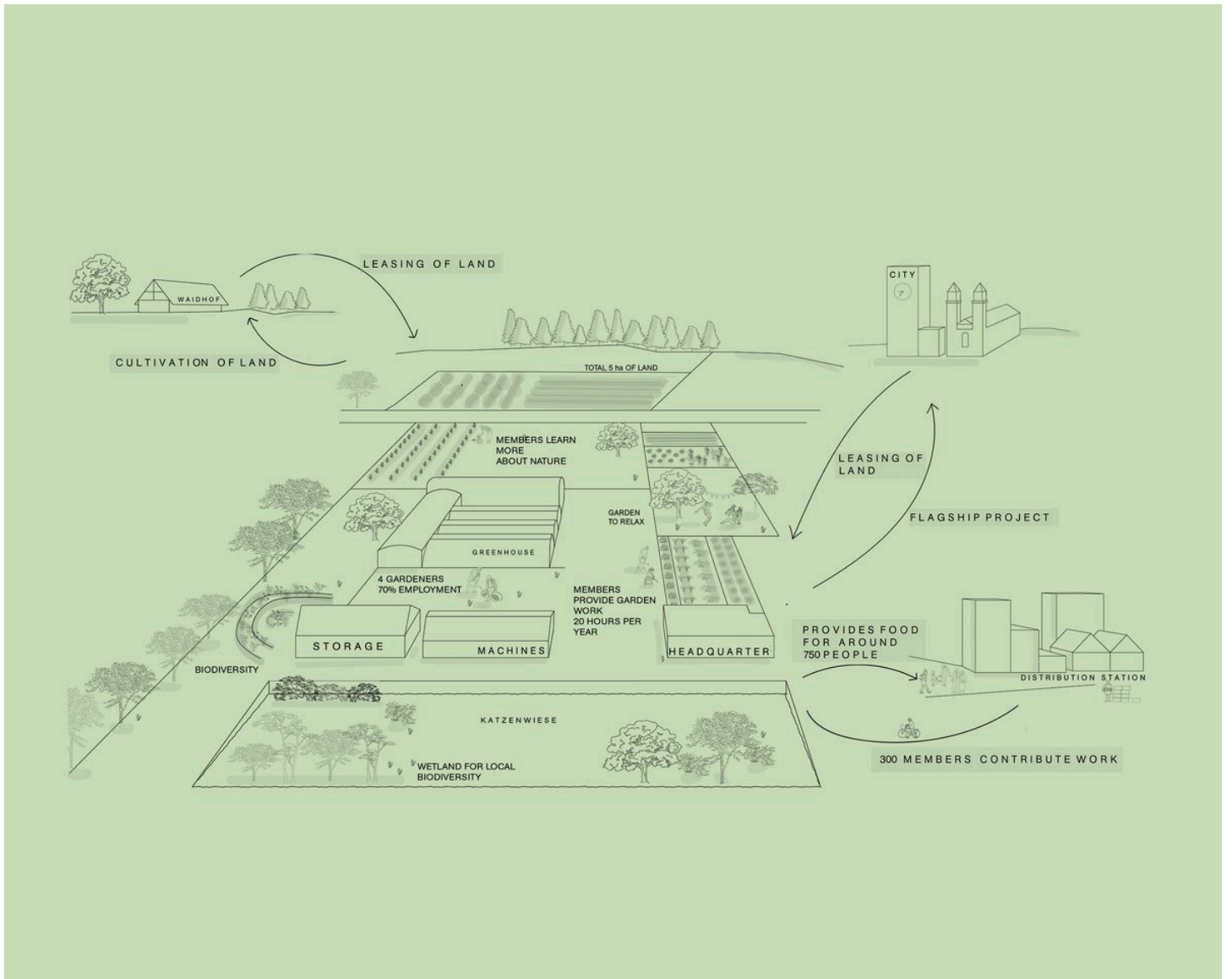
ACKERSYNDIKAT  
Land and farms as commons



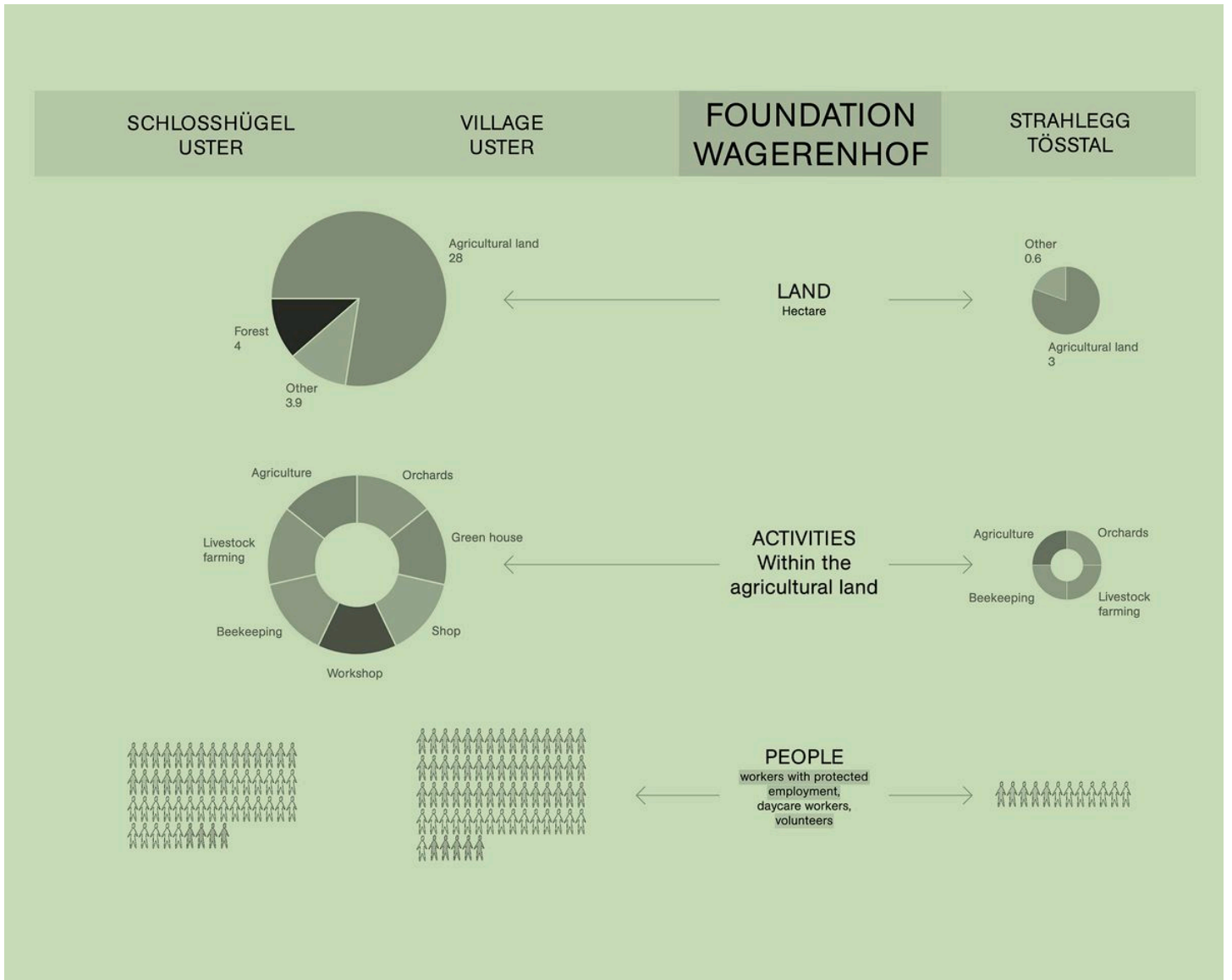
DER ACKER BLEIBT  
Farm Land Squatting



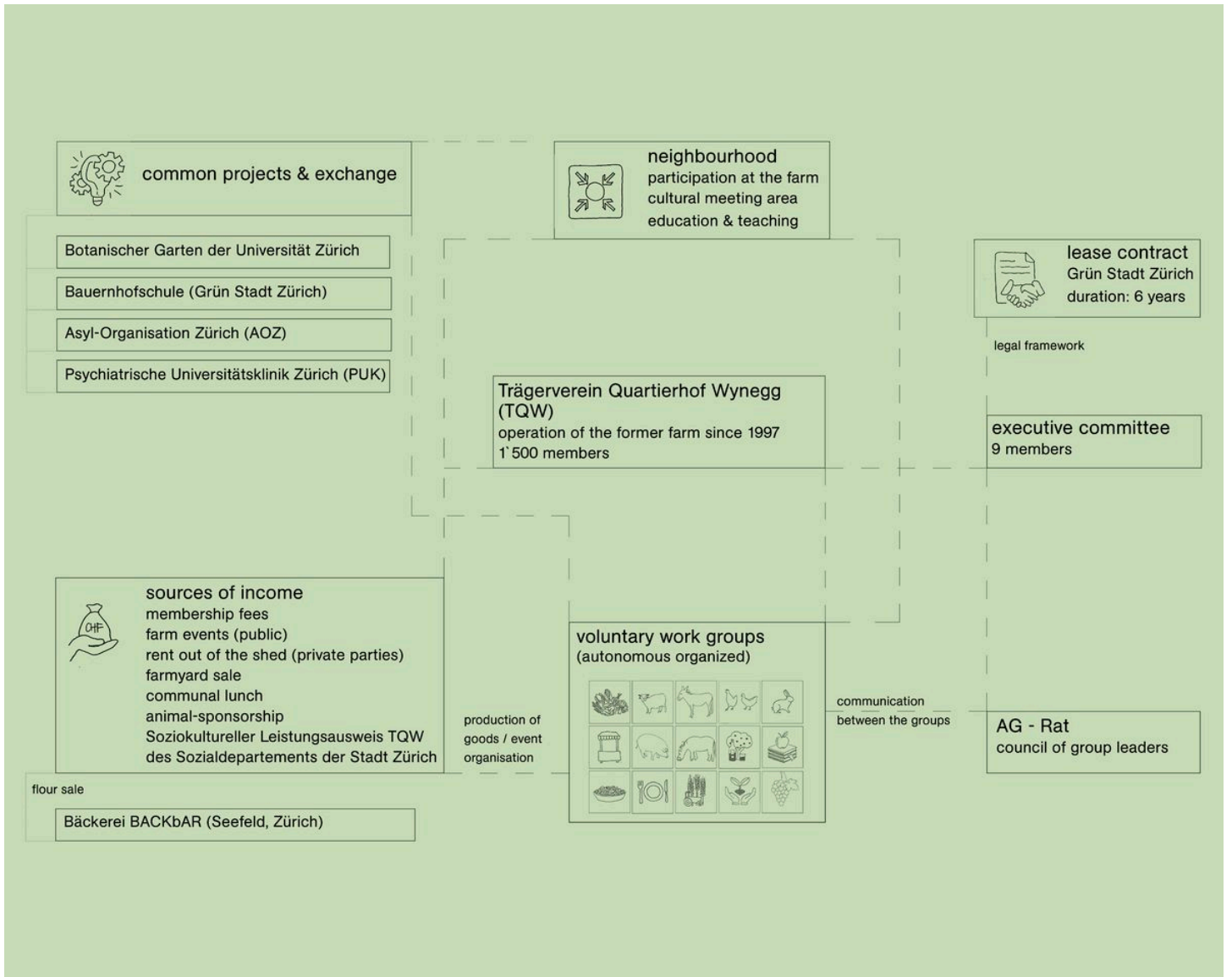
HERENBOEREN  
Large-scale Community-Based Farming



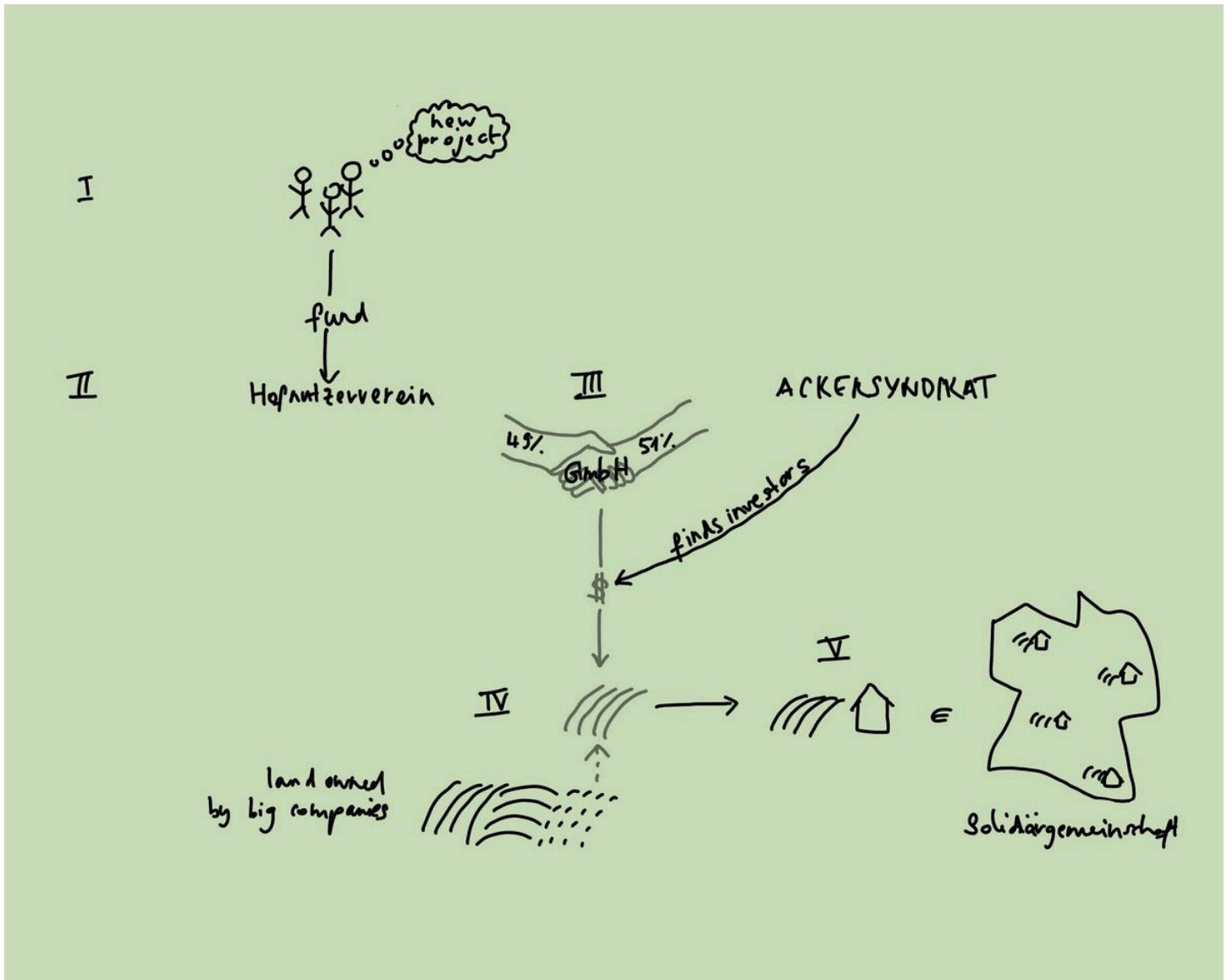
MEH ALS GMÜES  
Solawi and Housing



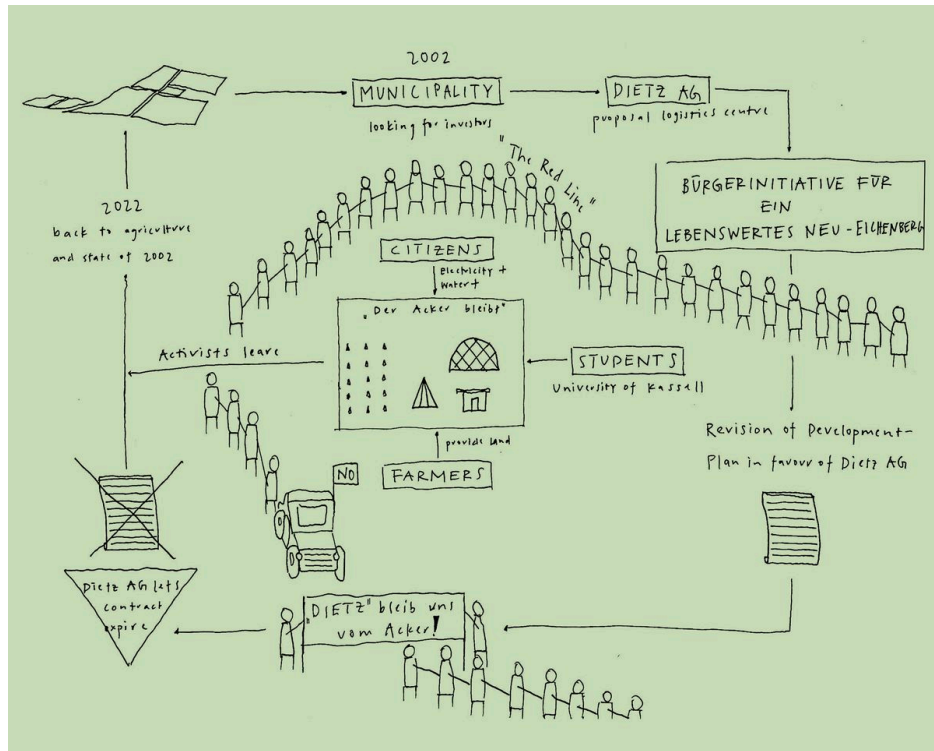
WAGERENHOF  
Farming and Care



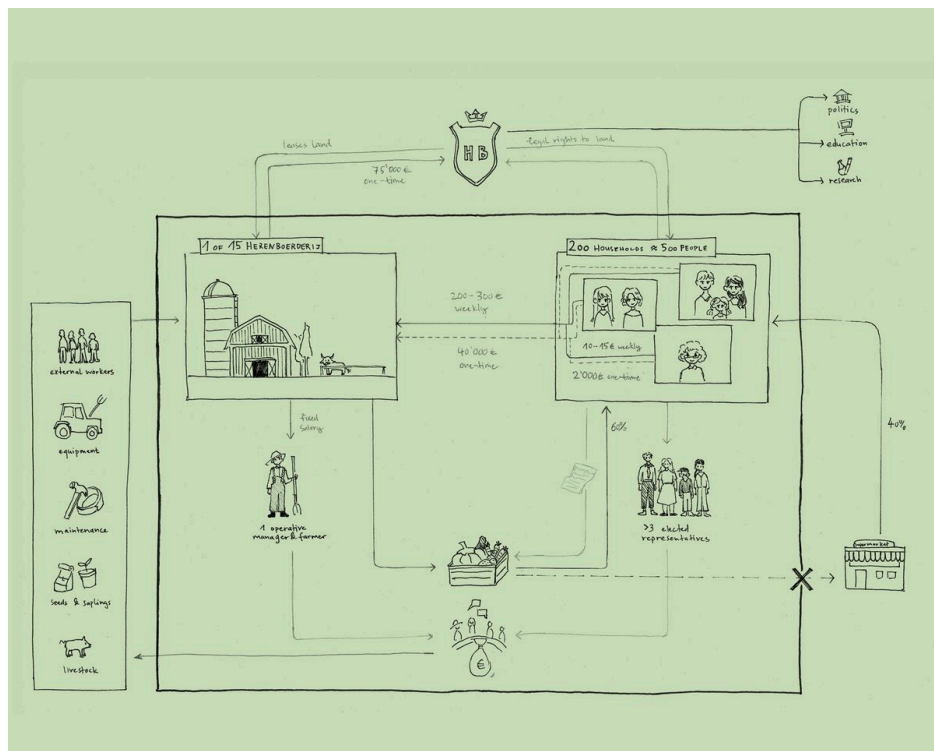
QUARTIERHOF WYNEGG  
Neighbourhood Farm



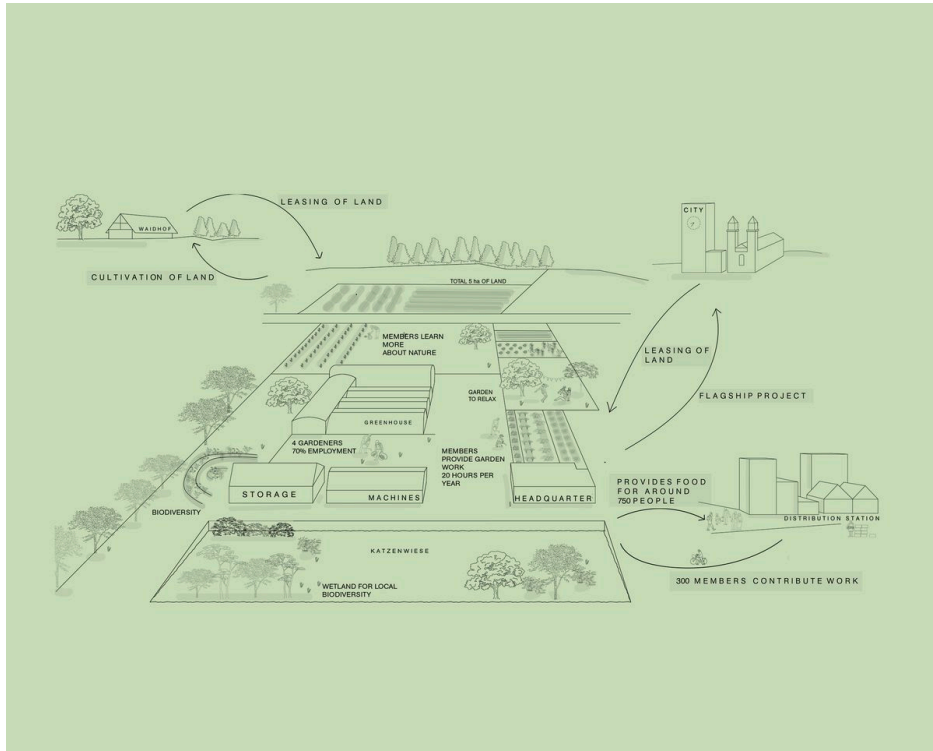
ACKERSYNDIKAT  
Land and farms as commons



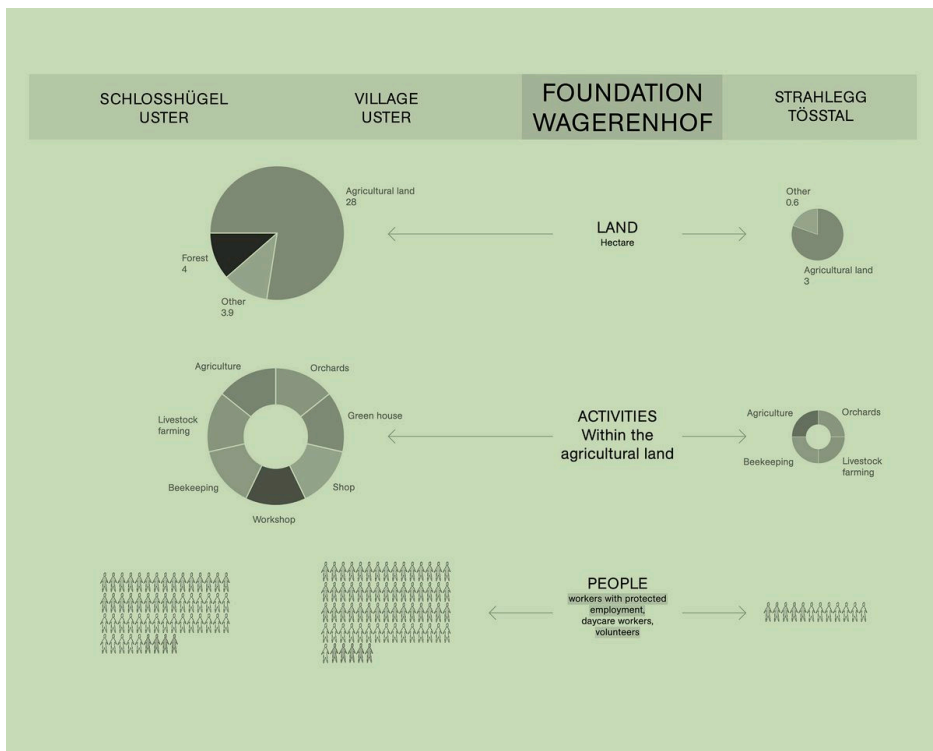
**DER ACKER BLEIBT**  
Farm Land Squatting



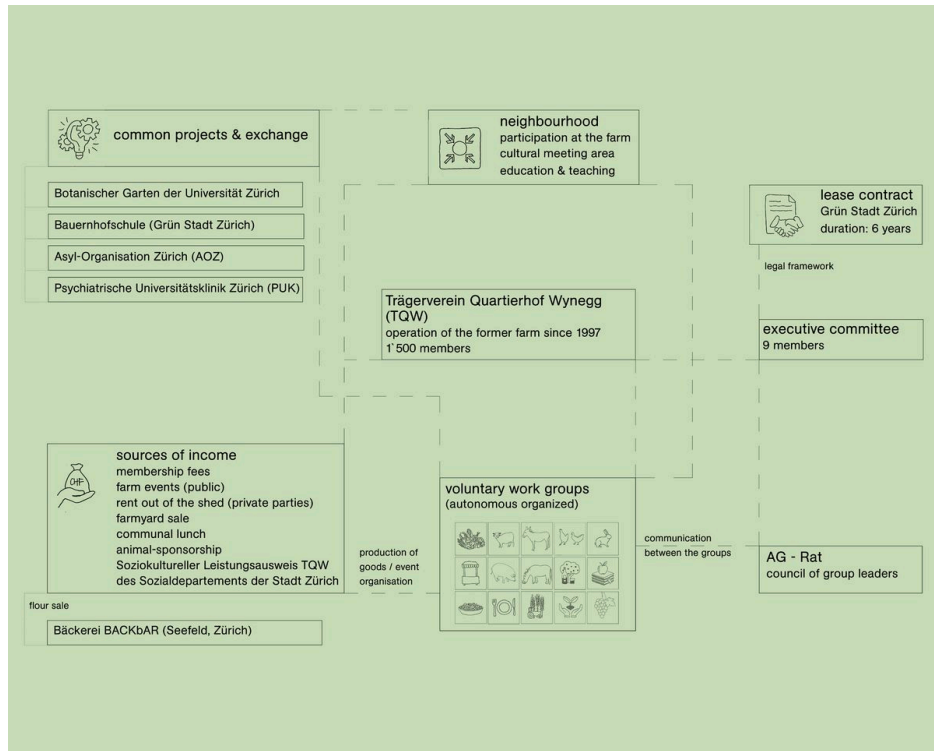
**HERENBOEREN**  
Large-scale Community-Based Farming



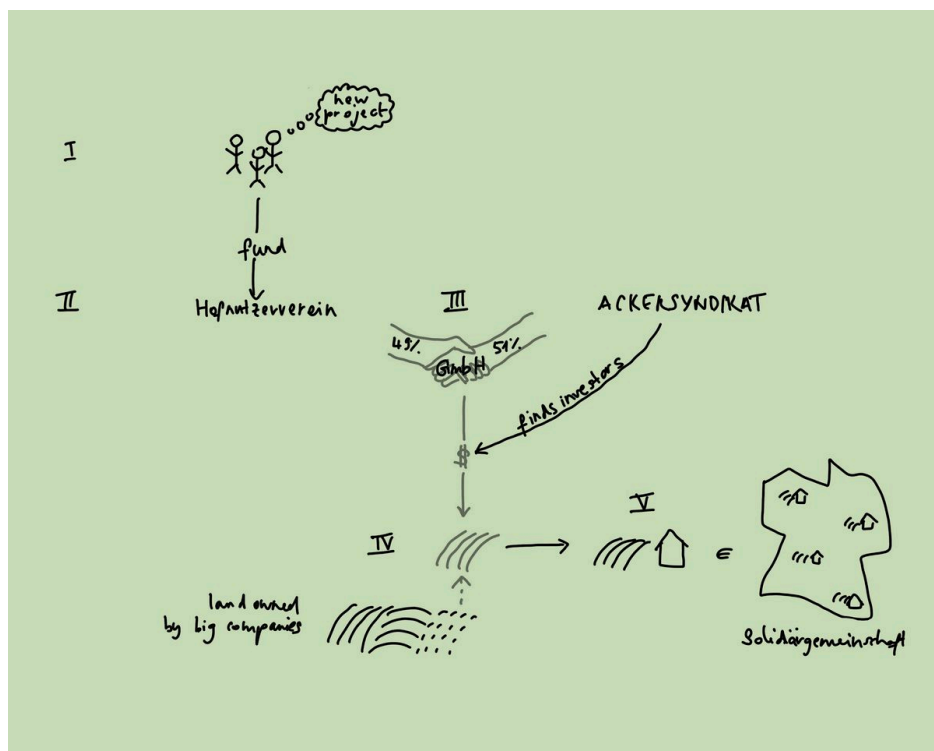
MEH ALS GMÜES  
Solawi and Housing



WAGERENHOF  
Farming and Care



QUARTIERHOF WYNEGG  
Neighbourhood Farm



ACKERSYNDIKAT  
Land and farms as commons

This work by Leon Bloch, Mira Weingartner, Viktor Jørgensen, Yufei Li, Claudia da Silva Bütikofer, Jonas Zimmermann, Martino Galli, Jennifer Braghetti, Michèle Zeder, Sofia Gloor, Till Blaser, Amélie Lambert, Nadina Häni, Donata De Ieso, and Roman Schürch was created as part of the design studio Agrarian Project at ETH Zurich in Spring 2023. The PDF is intended for educational purposes only. Its commercial distribution is strictly forbidden.

© 2024, Architecture of Territory

Architecture of Territory  
Professor Milica Topalović

TEACHING TEAM

Dorothee Hahn  
Milica Topalović  
Jakob Walter  
Jan Westerheide

Prof. Milica Topalović  
ETH Zurich  
ONA G41  
Neunbrunnenstrasse 50  
8093 Zurich  
Switzerland  
+41 (0)44 633 86 88  
[www.topalovic.arch.ethz.ch](http://www.topalovic.arch.ethz.ch)