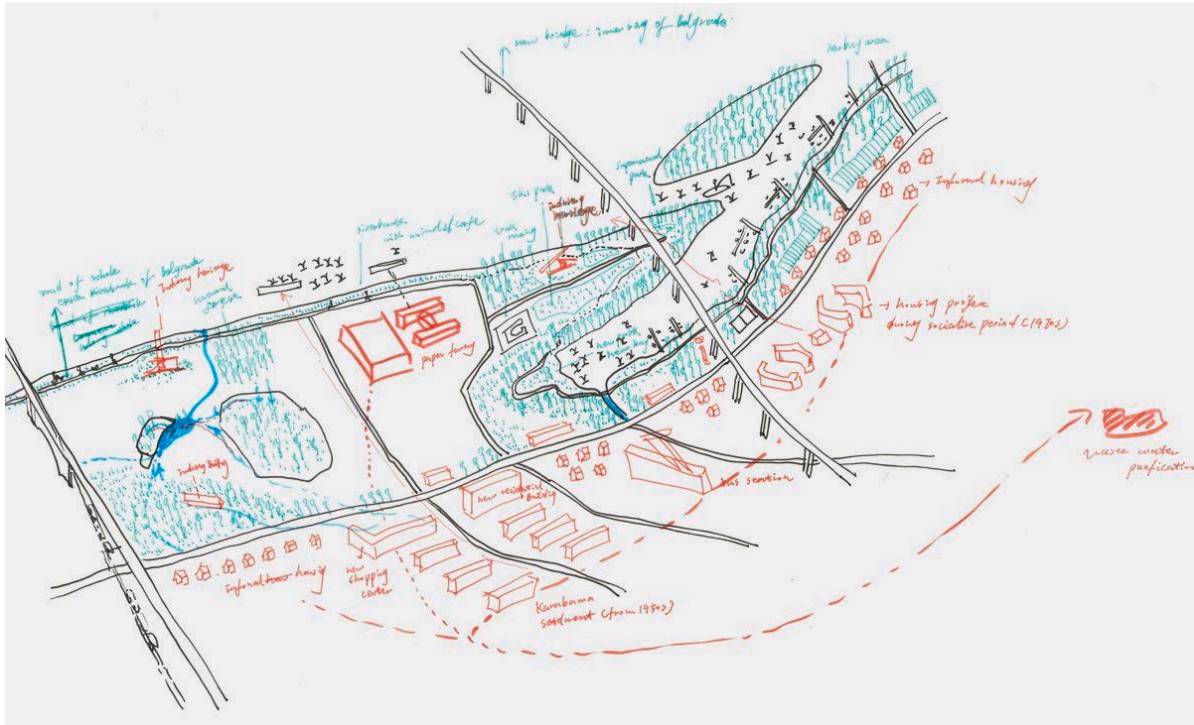


Ada Huja

# Regenerating Wastelands

Si Qi Perrine Hoo and Xinhe Li

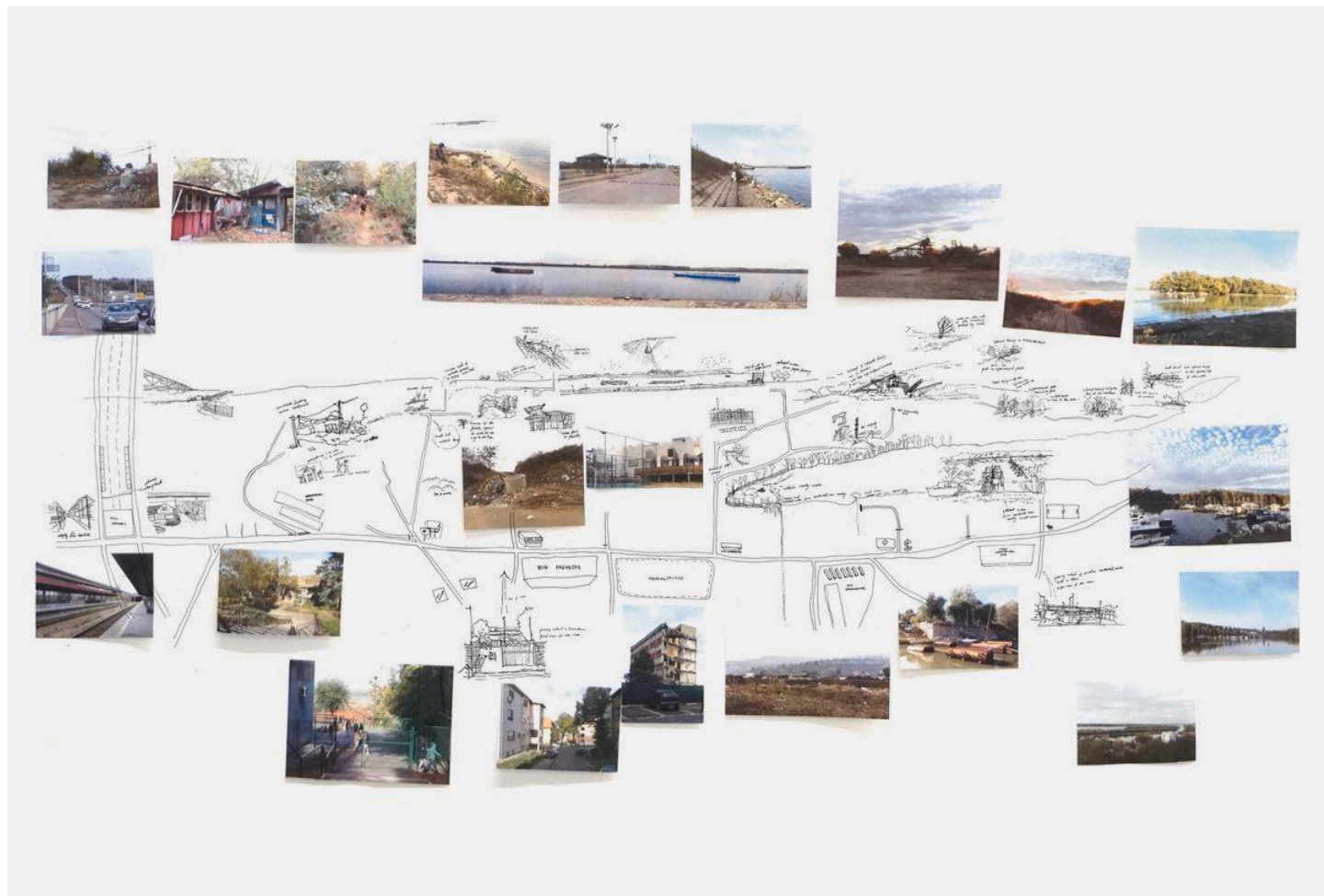


Between the southern shore of the Danube and the foothills of the Karaburma neighbourhood, under the Pačevački Bridge, lies the Ada Huja Peninsula. Once a separate island, years of sediment and infill have attached it to mainland Belgrade. At the beginning of the 20th century, the area was known for its natural springs, vineyards, and lush vegetation, but was in 1960 designated the city's official landfill. Half a century later, heavy pollution and ground speculation has turned it into a wasteland. At first glance, the area looks densely packed: the Port of Belgrade, with its cement production and storage hangars, and a large paper factory dominate the peninsula; in between, Roma settlements have formed around illegal dumping sites for construction materials and industrial waste. The city government and the recently privatised Port of Belgrade are in a legal dispute over ownership and development rights of the peninsula, while local environmental organisations and activists are fighting for the remediation of the vegetation and the contaminated soil. At the east end of the peninsula, recreational activities have sprung up, including a marina, sports grounds, a car racing track, and a river promenade with several restaurants. The "Supernatural Festival," a grassroots event, claims that these recreational activities have temporarily succeeded in protecting the very tip of the peninsula.

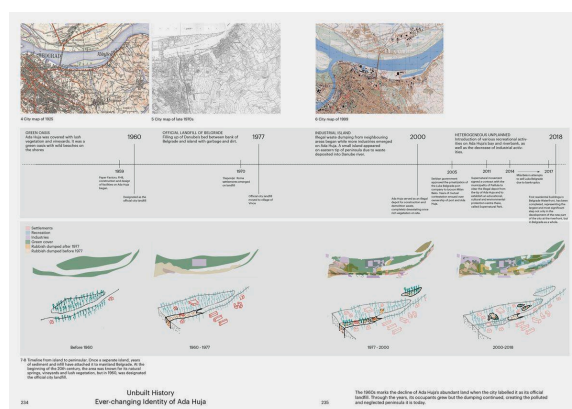
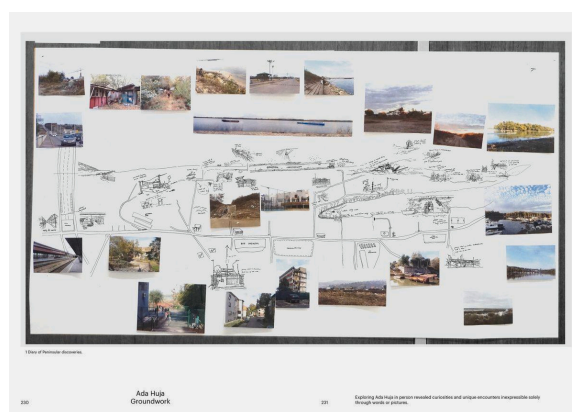


Industries have progressively moved out of Ada Huja and leave unique industrial heritage sites.

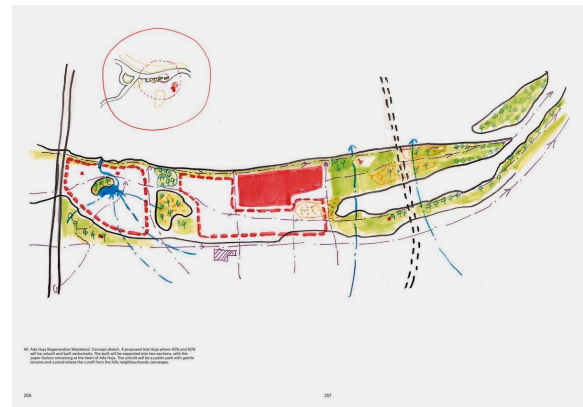
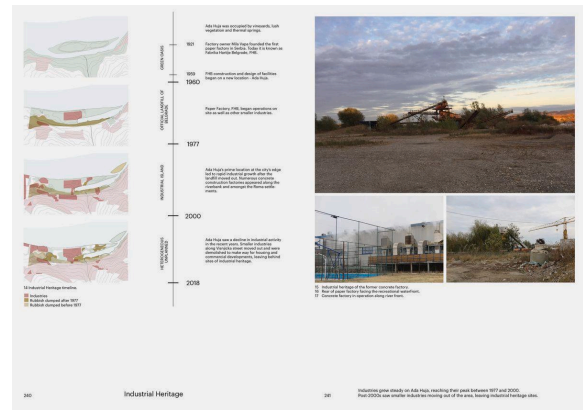
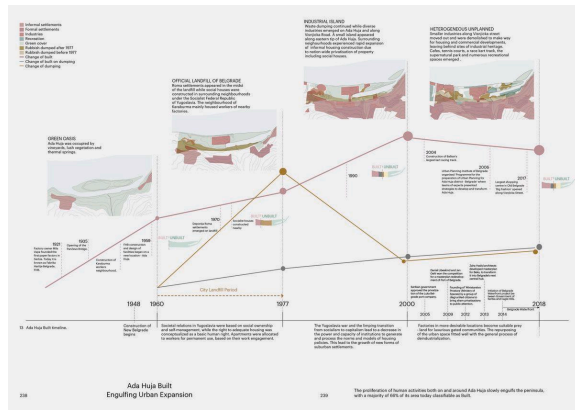
While the city government has announced plans for various construction projects, none has been carried out yet, because too many competing interests are at stake: housing, a new city centre in the east, shopping facilities; public shore access; ecological and environmental concerns over heavy pollution. In particular, this site reflects systemic questions relevant to the city as a whole, from its ring road to the sewage system. With economic pressures and such a rich history, our project proposes a balance between the built and the unbuilt, incorporating unique elements of the waste terrain and regenerative vegetation on Ada Huja.



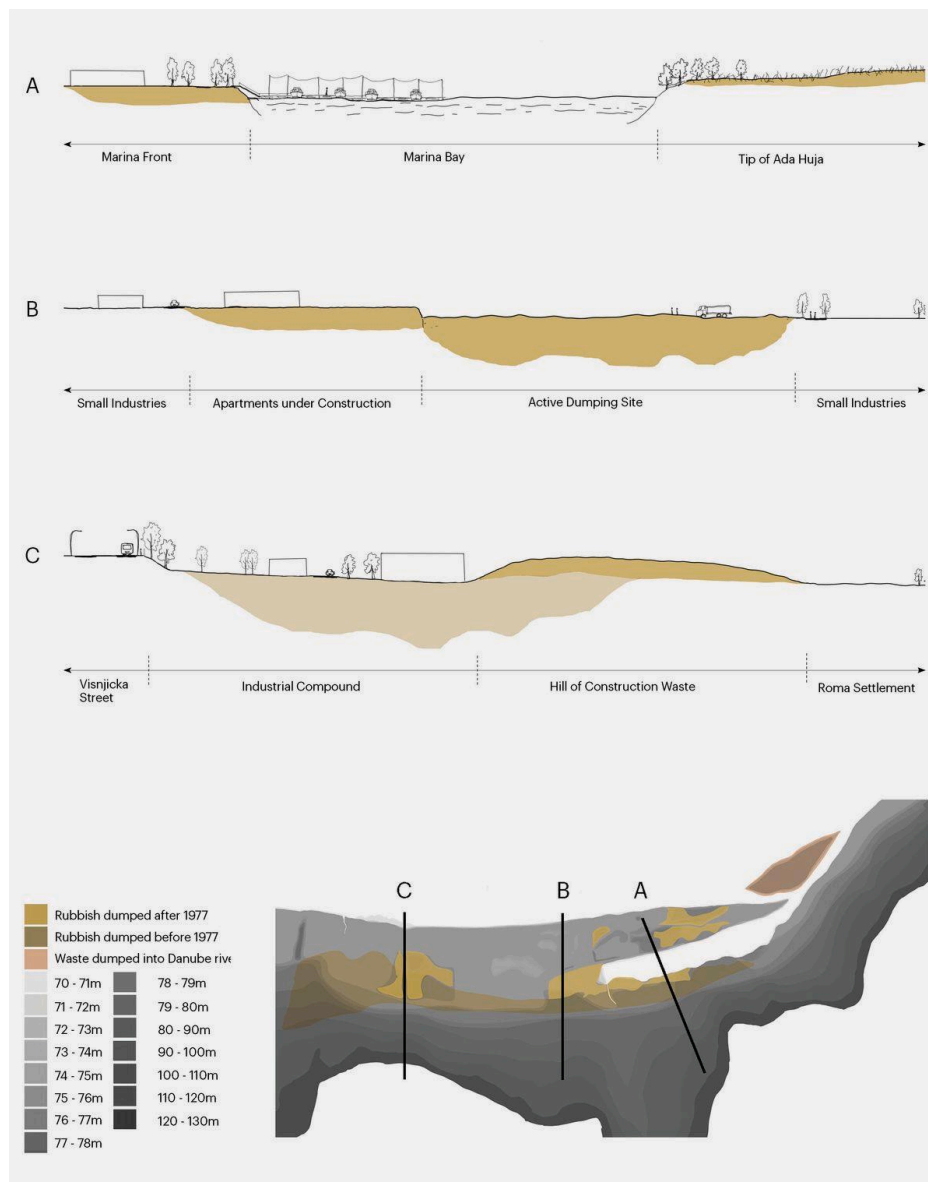
Diary of Ada Huga Danube Peninsular discoveries.



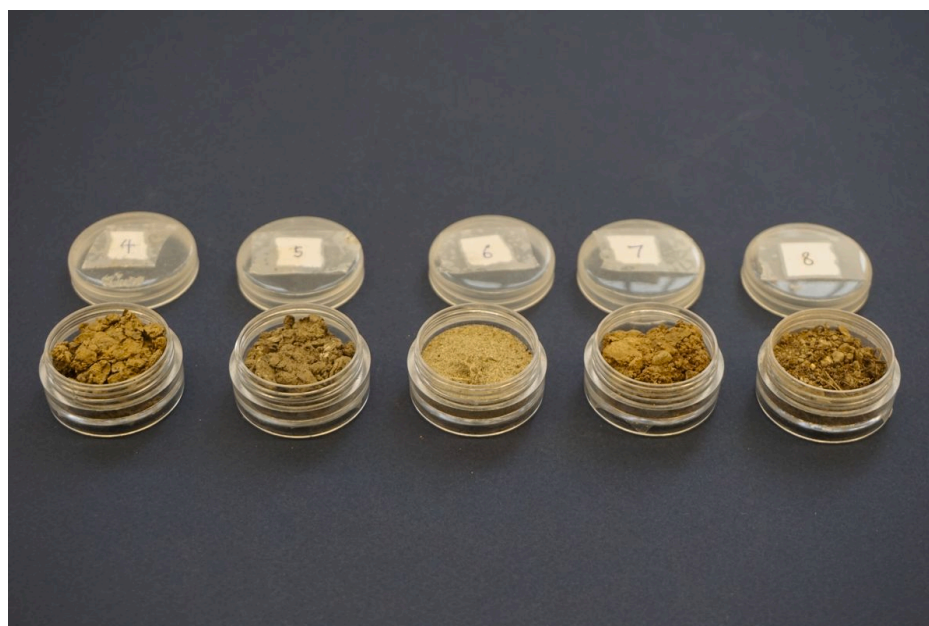




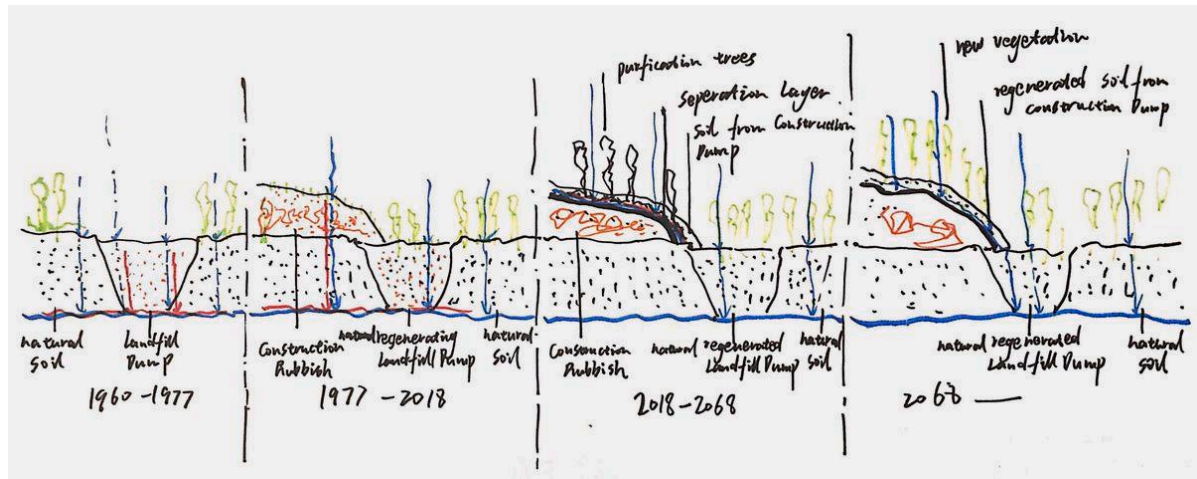
‘The project Ada Huja Regenerative Wastelands explores how we as spatial planners can develop scenarios where various interests can meet. The project imagines a new kind of post-industrial landscape, anchoring the spontaneous and regenerative quality of the unbuilt to support a unique environment for the built future of Ada Huja. Building on a system of slow regeneration, a new form of relationship can be established between the built and the unbuilt to create the future eastern centre of Belgrade.



Years of accumulated landfill garbage transformed the former island into a peninsula.



Ada Huja soil samples.



Timeline of regenerating wastelands.

## SOURCES

- “(AG Nekretnine) Urbanističko istraživanje – Beograd – Ada Huja – brušenje dijamanta na Dunavu !” \*ekapija.\* 1.1.2007. <https://me.ekapija.com/sr/real-estate/97734/KZIN-BUP/urbanisticko-istrazivanje-beograd-ada-huja-brusenje-dijamanta-na-dunavu>
- “Belgrade Waterfront.” Accessed December 2018. <https://www.belgradewaterfront.com/en/>
- “Businessman Beko questioned over Port of Belgrade.” B92. January 29.01.2013. Accessed December 2018. [https://www.b92.net/eng/news/politics.php?yyyy=2013&mm=01&dd=29&nav\\_id=84405](https://www.b92.net/eng/news/politics.php?yyyy=2013&mm=01&dd=29&nav_id=84405)
- “Construction Works Progressing According To Plan.” \*Belgrade Waterfront.\* 15.01.2018. Accessed December 2018. <https://www.belgradewaterfront.com/en/construction-works-progressing-according-to-plan/>
- John William Bills. "Don't Drown Belgrade: Why Belgrade is Protesting the Waterfront Development." \*The Culture Trip Ltd.\* 16.3.2018. Accessed 2018. <https://theculturetrip.com/europe/serbia/articles/dont-drown-belgrade-why-belgrade-is-protesting-the-waterfront-development/>
- Milivoje Pantovic. “Serbia Waterfront Activists Renew Protest Marches.” \*Balkan Insight.\* 29.9.2016. Accessed December 2018. <https://balkaninsight.com/2016/09/29/movement-let-s-not-drown-belgrade-continue-protests-09-28-2016/>
- Milivoje Pantovic. "Thousands rally against \$3bn UAE development project in Serbian capital." *Middle East Eye*. 26.5.2016. Accessed December 2018. <https://www.middleeasteye.net/news/thousands-rally-against-3bn-uae-development-project-serbian-capital>
- “Supernatural Park.” Accessed December 2018. <http://supernatural.rs/>
- "Three Years On, Evicted Roma in Belgrade are Still Homeless and Living in 'Squalid' Conditions." *Vice*. 84.2015. Accessed December 2018. <https://www.vice.com/en/article/mbnqvn/three-years-on-evicted-roma-in-belgrade-are-still-homeless-and-living-in-squalid-conditions>
- “Tycoon Beko to Get Serbia Railways Back on Track.” *Balkan Insight*. 31.07.2014. Accessed December 2018. <https://balkaninsight.com/2014/07/31/controversial-businessman-to-head-serbian-railways/>
- “Vinča PPP signed to solve biggest environmental problem in Serbia, region.” *Balkan Green Energy News*. 30.9.2017. Accessed December 2018. <https://balkangreenenergynews.com/vinca-ppp-signed-to-solve-biggest-environmental-problem-in-serbia-region/#:~:text=The%20Belgrade%20Mayor%2C%20Sini%C5%A1a%20Mali,management%20facilities%20for%20the%20Serbian>
- Zlata Vuksanović-Macura. “Map of Deponija Roma slum – illegally constructed in Belgrade’s industrial zone” in \*The mapping and enumeration of informal Roma settlements in Serbia.\* International Institute for Environment and Development. 12.10.2012. p. 694. <https://doi.org/10.1177/0956247812451809>



This work by Si Qi Perrine Hoo and Xinhe Li was created as part of the design studio Beograd Unbuilt (2/2) at ETH Zurich in Fall 2018. The PDF is intended for educational purposes only. Its commercial distribution is strictly forbidden.

© 2025, Architecture of Territory

Architecture of Territory  
Professor Milica Topalović

#### TEACHING TEAM

Hans Hortig  
Karoline Kostka  
Metaxia Markaki  
Ferdinand Rabe von Pappenheim  
Milica Topalović  
Adrianne Wilson

Prof. Milica Topalović  
ETH Zurich  
ONA G41  
Neunbrunnenstrasse 50  
8093 Zurich  
Switzerland  
+41 (0)44 633 86 88  
[www.topalovic.arch.ethz.ch](http://www.topalovic.arch.ethz.ch)