

Orlovica Breg

Orlovica Hill: Sculpting the Mirijevo Terrain Vague

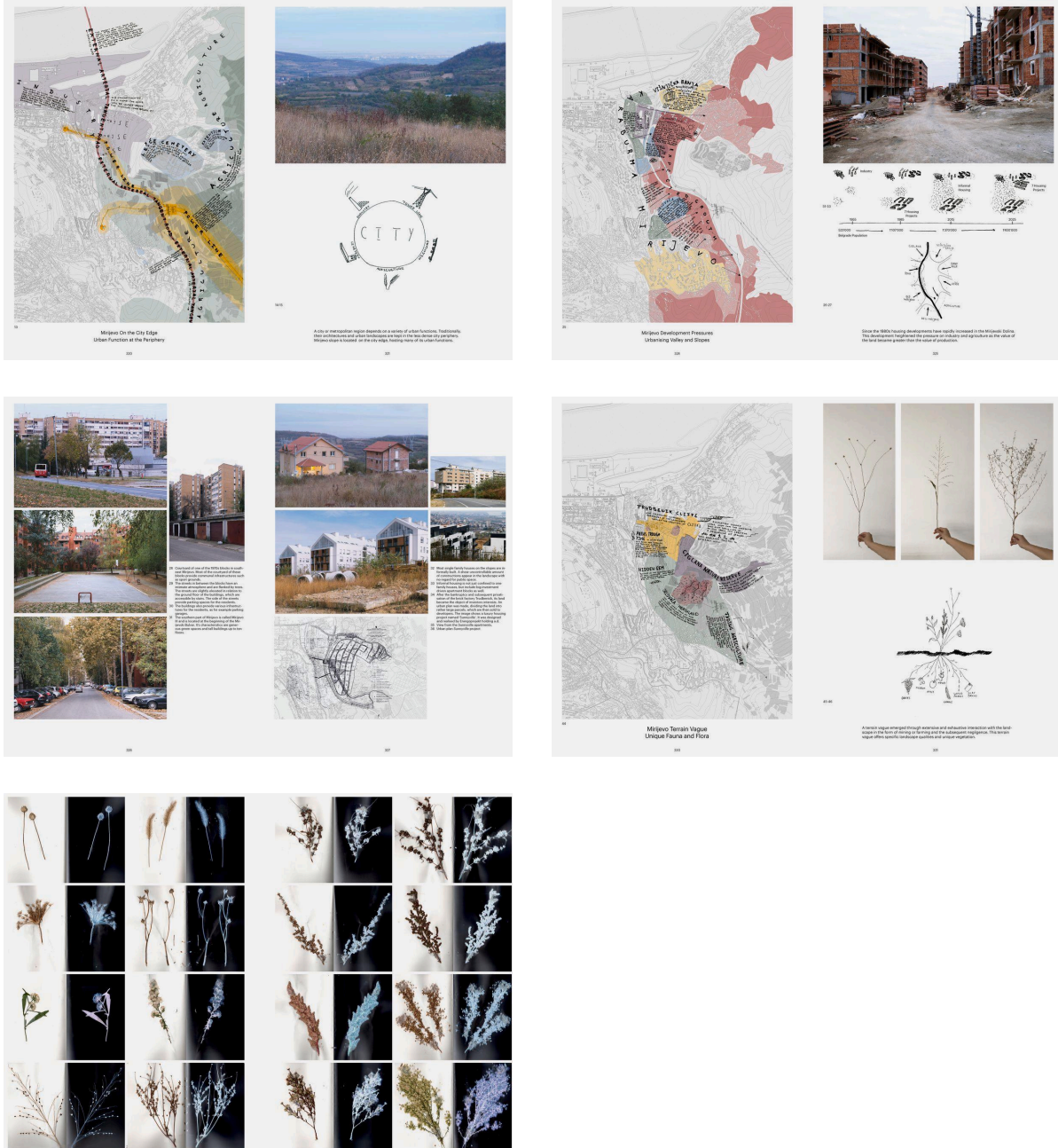
Katrin Röthlin and Mirko Schaap



The gentle slopes of the Šumadijan Upland form a bowl around the east side of Belgrade's central area. At their summit, the cemetery in the Lešće neighbourhood overlooks the sprawling villages to the south and the confluence of the Sava and Danube Rivers with the broad Pannonian Basin in the north. Formerly an agricultural and pastoral area in the vicinity of the city, settlements and industry have encroached upon the eastern hills, turning the farmland into pockets of unused grasslands.



View toward Belgrade from Orlovica Breg.



A terrain vague emerged through the extensive and exhaustive interaction with the landscape and subsequent negligence whilst the geometry of the farming plots is still visible. The vegetation has changed entirely to various shrubs and herbs. Therefore, the Mirijevo Terrain Vague offers an atmosphere with rare landscape qualities and foliage should be protected from urban developments and acknowledged as a public landscape for Belgrade. The project explores the idea of further urban reappropriation and the manifestation of uses we already see in the area. They become the basis for the future vision of Orlovica Breg as a diverse and culturally vibrant landscape in the east of the city.



Proposal for public gardens in Mirijevo Terrain Vague.

SOURCES

- “Ada Huja.” *Flickr.* Accessed December 2018. <http://www.flickr.com/photos/aleksandar-acimovic/11939806945>
- “Britten wählten ‘Miss Strommast.’” *Blick*. Accessed December 2018. <http://www.blick.ch/news/wirtschaft/das-gesicht-der-energiewende-britten-waehlten-miss-strommast-id3655205.html>
- “Construction Mirijevski Bulevar.” *Beobild.* Accessed December 2018. <http://beobuild.rs/extension-of-mirijevski-boulevard-p2289.html>
- “Karaburma.” *Beobild*. Accessed December 2018. <http://beobuild.rs/forum/viewtopic.php?t=790&start=1600>
- “Konjarnik.” *Pinterest.* Accessed December 2018. <http://www.pinterest.ch/pin/306104105898692270/>
- “Map of Belgrade, 1658.” Milan Milenkovic. Accessed December 2018. <http://www.milanmilenkovic.com/wp-content/uploads/2016/06/>
- “Mirijevo.” *Archive.today.* Accessed December 2018. <http://archive.fo/fs4RB>
- “Mirijevski Bulvar.” *Wikimedia.* Accessed December 2018. <https://commons.wikimedia.org/wiki/File:MirijevskiBulevar2011.jpg>
- “Mirijevski Potok fooding.” *Moja Ladja.* Accessed December 2018. <http://www.mojaladja.com/forum/index.php?topic=1240.0>
- “Mirijevski Potok.” *Wikimedia.* Accessed December 2018. https://commons.wikimedia.org/wiki/File:Mirijevski_potok.JPG
- “Novo Mirijevo.” *Mirijevo.* Accessed December 2018. <http://www.mirijevo.co.rs/Istorija/>
- “Orlovsko Naselje.” *Sanja Knezevic.* Accessed December 2018. <http://www.sanja-knezevic.com/portfolio/uprooted-community/>
- “Rospi Čuprija”. *Znanje.* Accessed December 2018. http://www.znanje.org/i/i23/03s/01/page_02.html
- See the project “Giants” by Thomas Shine and Jin Choi.
- “Slanci.” *Serbian Orthodox Church.* Accessed December 2018. http://www.spc.rs/eng/monastery_st_archdeacon_stephen_slanci_celebrated_its_patrons_feast_day
- “Urban Plan Sunnyville.” *Urbel.* Accessed December 2018. <http://www.urbel.com>
- “Vinča.” *Vestinet.* Accessed December 2018. <http://www.vestinet.rs/aktuelno/najstarija-evropska-civilizacija-stara-8-milenijuma-nastala-je-u-drevnoj-prethriscanskoj-srbij>
- “Višnjica Banja.” *CAB.* Accessed December 2018. <http://www.cab.rs/blog/arhitektura-koja-pomera-granice#.XDtnOKdoRQI>
- “Višnjica.” *Belgrade Skonasledje.* Accessed December 2018. <https://beogradskonasadje.rs/>
- “Zvezdara.” *Allevents*. Accessed December 2018. <http://allevents.in/Belgrade/dani-otvorenih-vrata/618617611632333>

This work by Katrin Röthlin and Mirko Schaap was created as part of the design studio Beograd Unbuilt (2/2) at ETH Zurich in Fall 2018. The PDF is intended for educational purposes only. Its commercial distribution is strictly forbidden.

© 2025, Architecture of Territory

Architecture of Territory
Professor Milica Topalović

TEACHING TEAM

Hans Hortig
Karoline Kostka
Metaxia Markaki
Ferdinand Rabe von Pappenheim
Milica Topalović
Adrienne Wilson

Prof. Milica Topalović
ETH Zurich
ONA G41
Neunbrunnenstrasse 50
8093 Zurich
Switzerland
+41 (0)44 633 86 88
www.topalovic.arch.ethz.ch