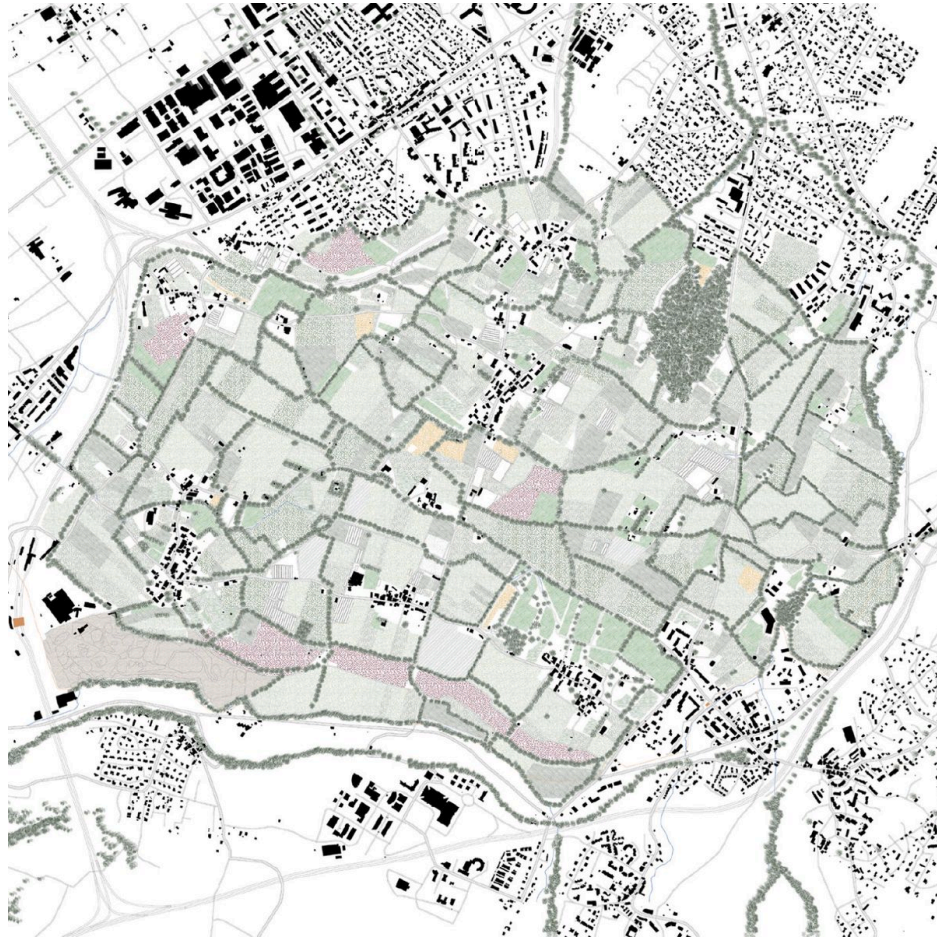


Commune Bardonnex

The Frozen Landscape of the *Campagne Genevoise*

Sarah Stieger and Oliver Burch



In the very south of the Canton of Geneva, the agricultural commune of Bardonnex and its three hamlets form the gate to the French commuter towns around St Julien. It is located within Geneva's agricultural belt of *Surface d'Asselement*, 8400 hectares of protected crop-rotation area consisting of open land, intercalary artificial grassland, and arable grassland. The conception of this zone was given by a federal law in 1992 requiring each canton to reserve a certain percentage of land for self-sufficiency during times of crisis. More than safeguarding Geneva's food supplies, this belt of land has become crucial for the city's exclusivity and high quality of life: few other cities today have such a small, compact footprint and a pristine cultural landscape nearby.



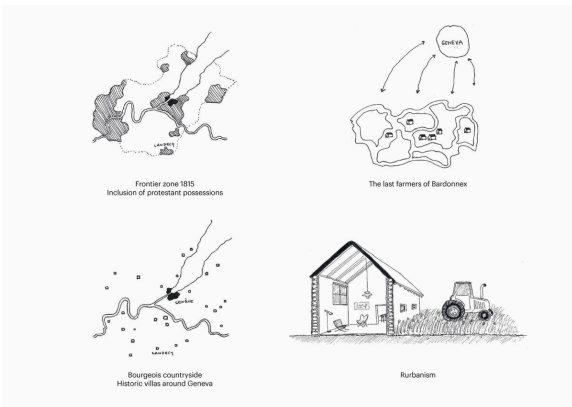
Intensive agriculture on the *surfaces d'assolement*.



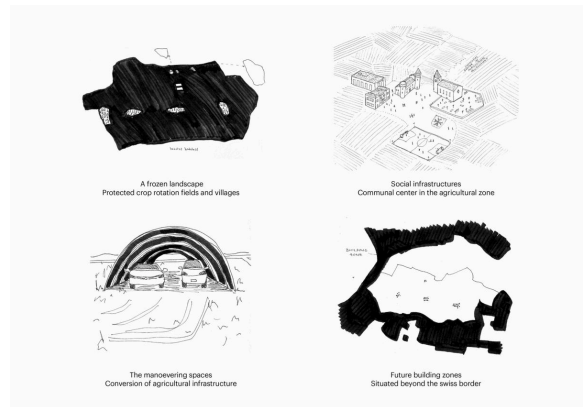
Campagne Genevoise's fertile grounds.



Country house in Bardonnex.



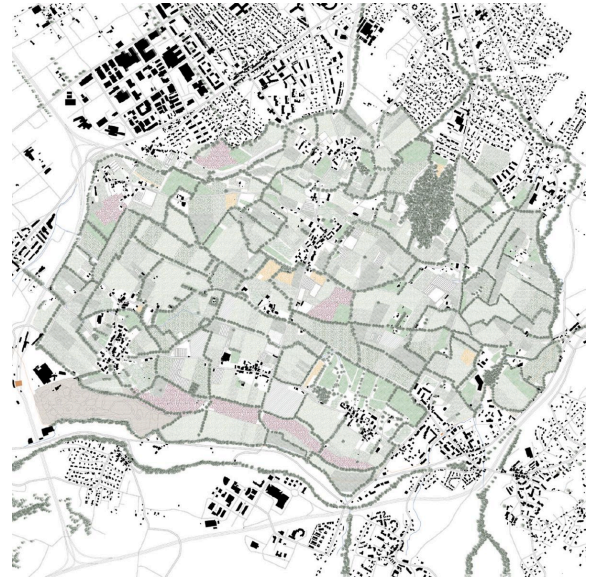
Agricultural land as buffer zone and leisure space.



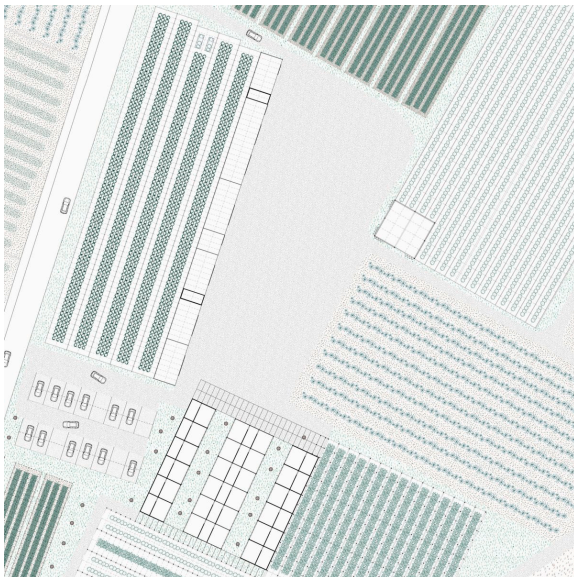
The frozen landscape and temporary structures.



Agripelago: cultivated fields surround Geneva.



Agripelago: a symbiosis of public spaces and productive fields.

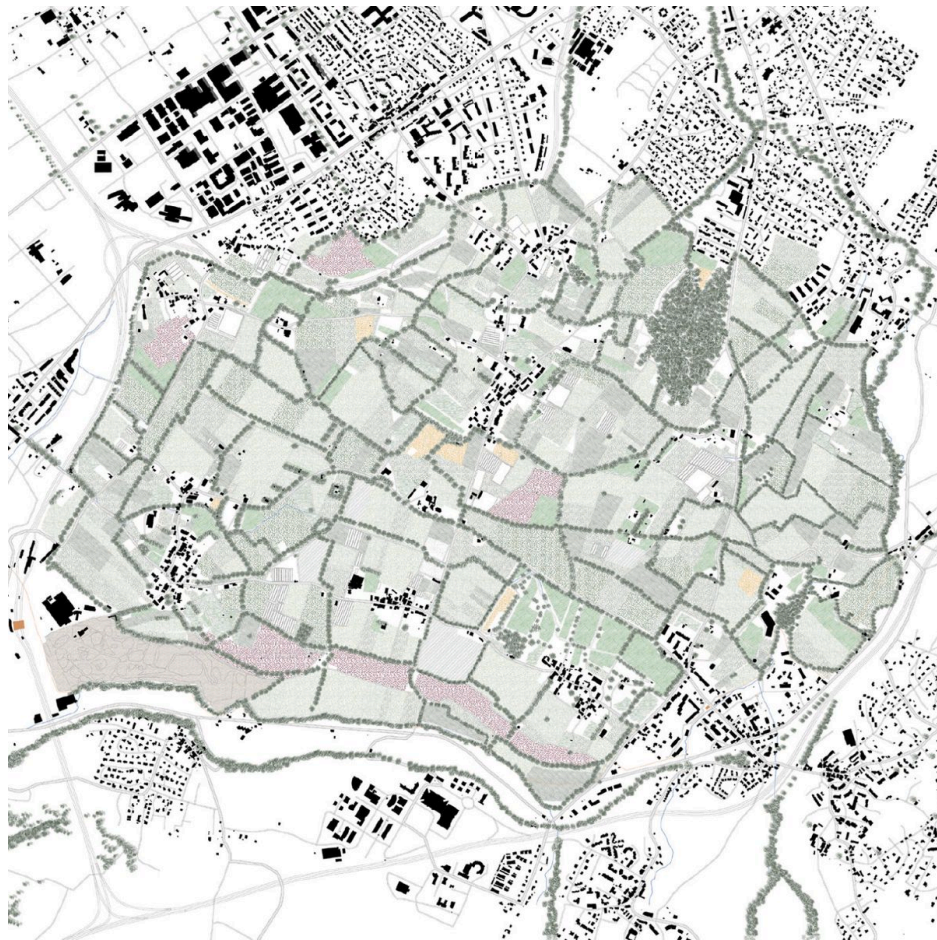


Greenhouses for agriculture and public use.

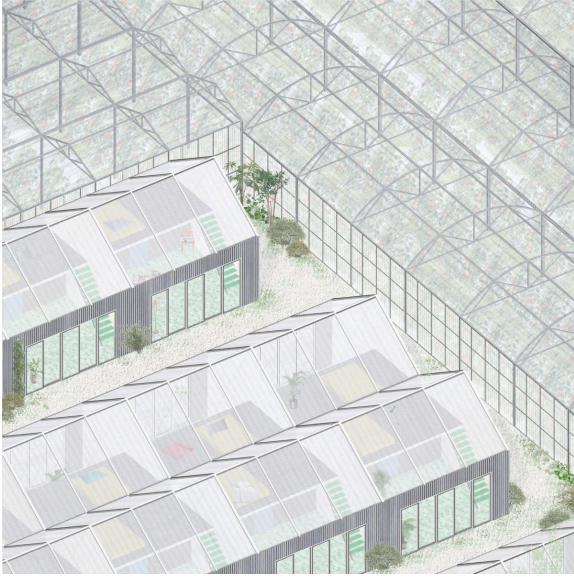
In spite of preserving the landscape and resisting urban sprawl, this zone of *Surface d'Assolément* has become more of a burden for the commune of Bardonnex, which has a substantial reserve of communally owned land, but most of it within the protected zone. While the population is growing, further building development is gridlocked and the municipality struggles to provide enough services to its inhabitants for the simple lack of space. The current extension of the primary school, for example, has been set up without formal permission on a communal orchard only to be given temporary permit post factum, without plans for a permanent relocation.

The lack of space has caused the people to share their land inventively: The fields are cultivated following individual agreements among the farmers and not necessarily along property lines. The commune designates the use of its land seasonally according to special needs and local festivities. Civic services like the fire department and police are also shared with the neighbouring commune of Plan Les Ouates.

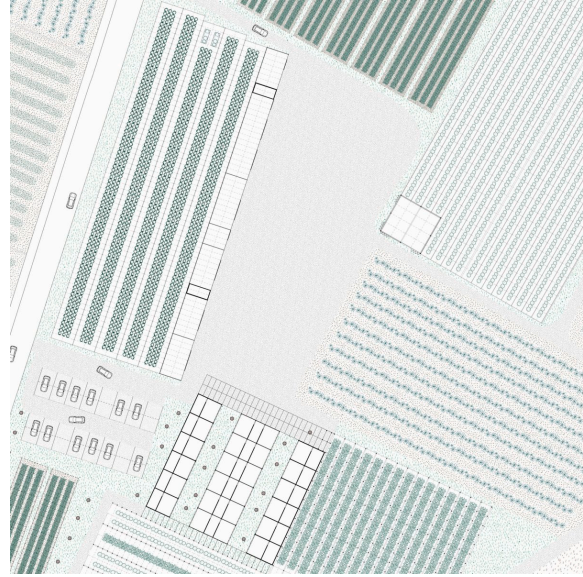
Being one of the poorer villages without industries to generate high tax incomes, Bardonnex does not reach the critical limit to receive rezoning permits from the Canton and to develop according to its needs. This raises the question of the power of the commune, which has lost all competence in planning and has no means to facilitate growth.



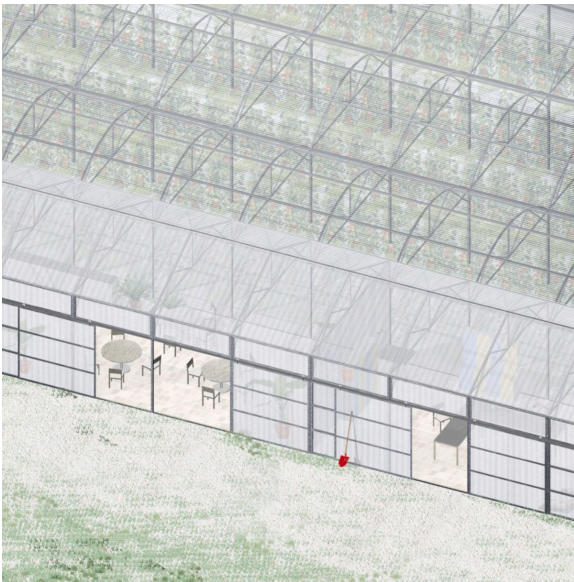
Agripelago: a symbiosis of public spaces and productive fields.



Agripelago: the workers' dwelling.



Greenhouses for agriculture and public use.



Agripelago: the communal hall.

This work by Sarah Stieger and Oliver Burch was created as part of the design studio
Communes at ETH Zurich in Spring 2017. The PDF is intended for educational purposes only.
Its commercial distribution is strictly forbidden.

© 2025, Architecture of Territory

Architecture of Territory
Professor Milica Topalović

TEACHING TEAM

Thais De Roquemaurel
Hans Hortig
Karoline Kostka
Metaxia Markaki
Ferdinand Rabe von Pappenheim
Milica Topalović

Prof. Milica Topalović
ETH Zurich
ONA G41
Neunbrunnenstrasse 50
8093 Zurich
Switzerland
+41 (0)44 633 86 88
www.topalovic.arch.ethz.ch